

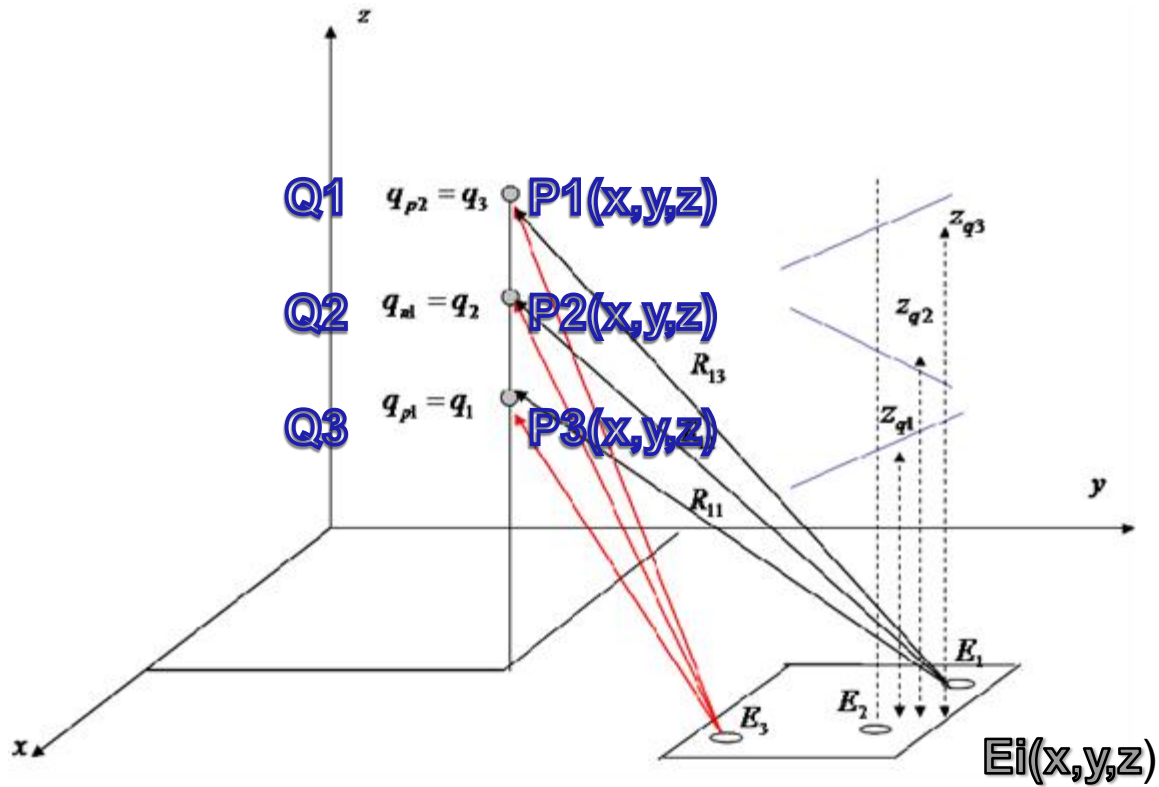


## **Inverse Problem of Coulomb's Law: Preliminary results on Belém Campaign.**

Moacir Lacerda<sup>1</sup>, Carlos Augusto Morales Rodrigues<sup>2</sup>, Evandro Moimaz Anselmo<sup>2</sup>, Rachel Albrecht<sup>3</sup>, Wagner Dal Piva Rocamora<sup>1</sup>, Kaian Lopez Fernandes<sup>1</sup>, Robson Jaques<sup>3</sup>

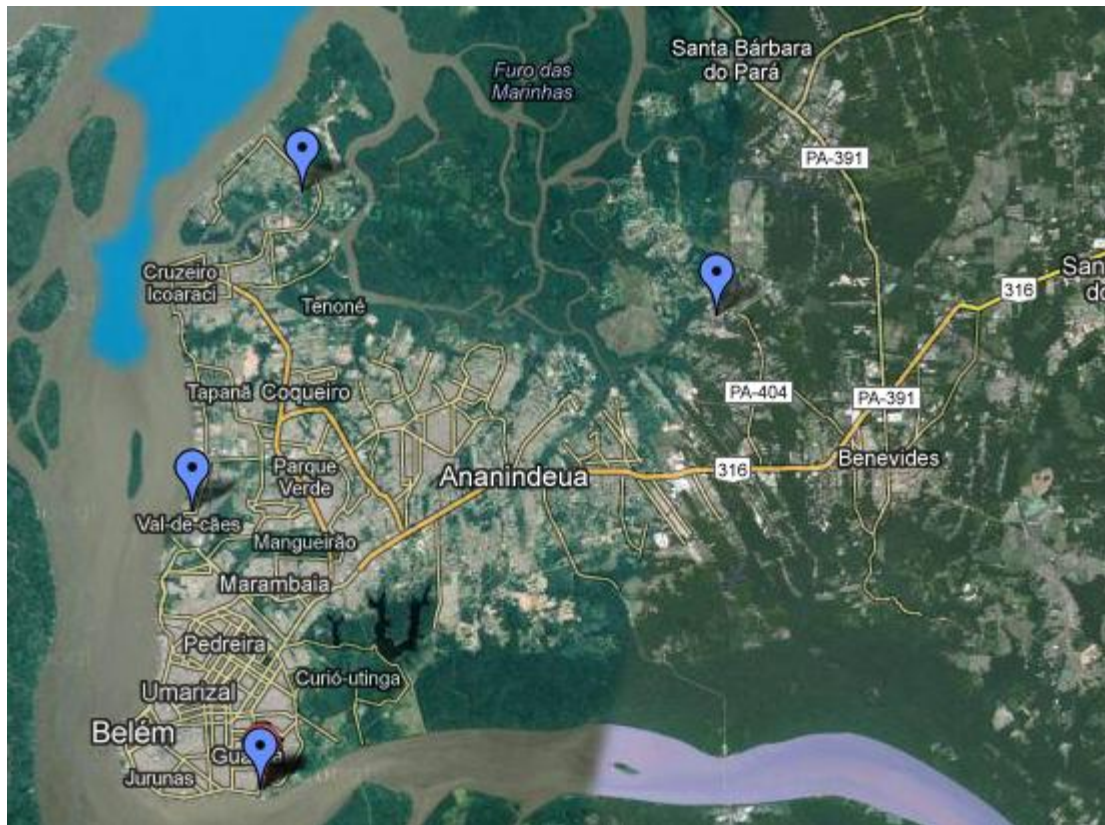
1. Laboratório de Ciências Atmosféricas da Universidade Federal de Mato Grosso do Sul (LCA-UFMS);
2. Instituto de Astronomia, Geofísica e Ciências Atmosféricas - Universidade de São Paulo (IAG-USP);
3. Instituto Nacional de Pesquisas Espaciais (INPE)

# The inverse problem



RADAR		BENE		OUT		AERO	
-48.4583	-1.4749	-48.3017	-1.3167	-48.447	-1.2673	-48.4824	-1.3845

BENE = Benevides, OUT = Outeiro, AERO = Aeroporto.



Field  
mill  
network

-  R. Cap. Barata, 219-303  
Benevides - PA, 68795-000
-  Passagem da Fab, 197-399 - Itaiteua  
Belém - PA, 66842-050
-  Rod. Artur Bernardes, 5694-7000 - Val-de-cães  
Belém - PA, 66115-000
-  R. Augusto Corrêa, 1311-1591 - Guamá

# methodology

- Step1. Analyze radar image to localize the possible centers of charge **P<sub>j</sub>(x<sub>j</sub>, y<sub>j</sub>, z<sub>j</sub>)**.
- Step2. Construct the function R<sub>i,j</sub>, where the index *i* refers to the position of field mill and *j* refers to the center of charge.

$$R_{i,j} := 2k \cdot \frac{(z_2 - z_{n1})}{\left[ (x_2 - x_{n1})^2 + (y_2 - y_{n1})^2 + (z_2 - z_{n1})^2 \right]^{\frac{3}{2}}}$$

- Step 3. Calculate column vector  $q := (R^T \cdot R)^{-1} \cdot R^T \cdot E$

- Step 4 . Use Coulomb's Law to calculate the direct value
- $E_{c_i} = \sum_{ij} (R_{ij} \cdot q_j)$  for fitting data

# Results: STEP1

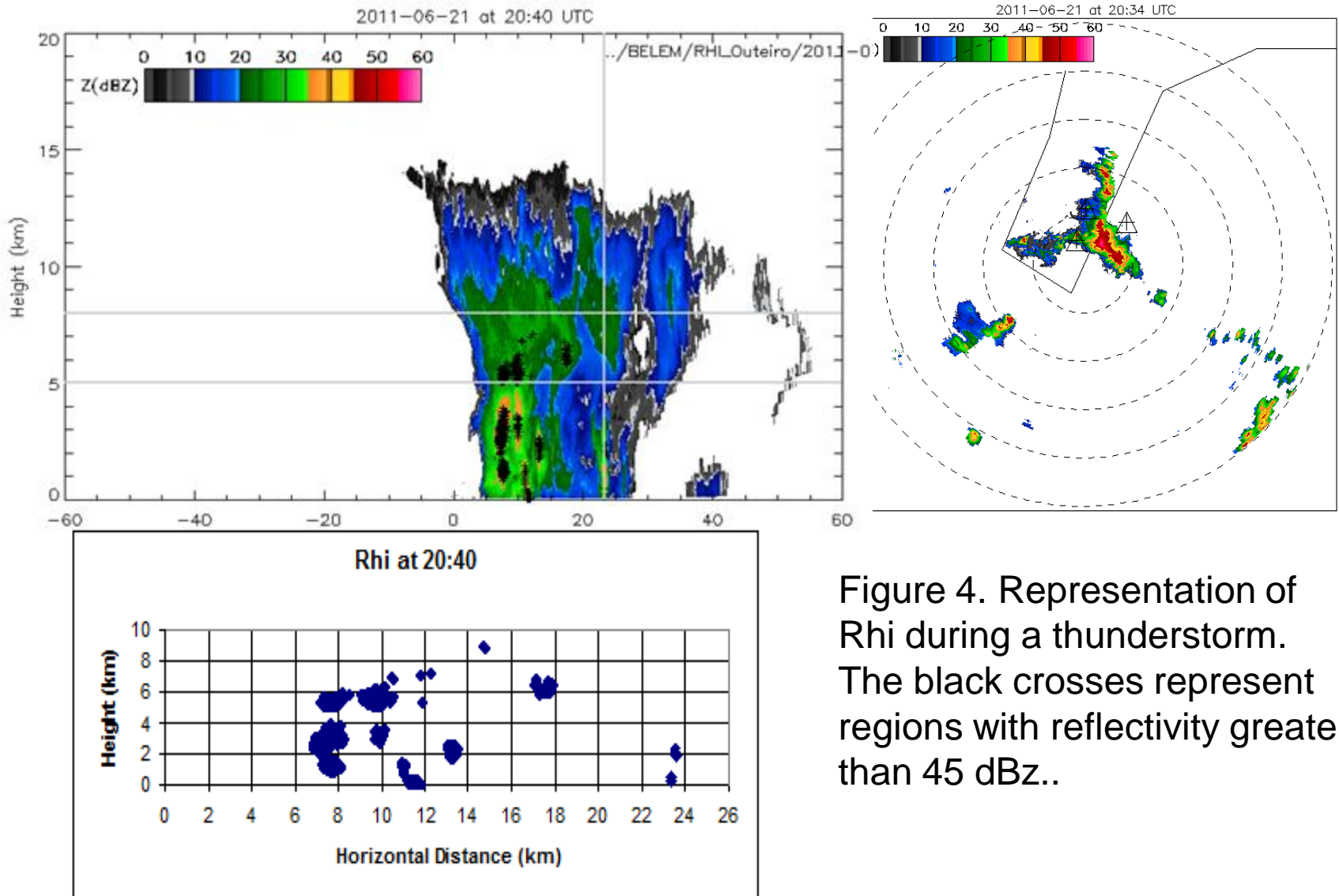


Figure 4. Representation of Rhi during a thunderstorm. The black crosses represent regions with reflectivity greater than 45 dBz..

# Step 2 and 3

$$R = \begin{pmatrix} R11 & R12 \\ R21 & R22 \\ R31 & R32 \end{pmatrix} \quad E := \begin{pmatrix} E1 \\ E2 \\ E3 \end{pmatrix}$$

$$q := (R^T \cdot R)^{-1} \cdot R^T \cdot E$$

$$R = \begin{pmatrix} 52.8996 & 62.9145 \\ 19.2823 & 30.3041 \\ 32.577 & 45.049 \end{pmatrix} \quad E = \begin{pmatrix} 925.4 \\ 2829.769 \\ 1276 \end{pmatrix} \quad (R^T \cdot R)^{-1} \cdot R^T = \begin{pmatrix} 0.0968 & -0.1077 & -0.0627 \\ -0.0663 & 0.0883 & 0.0554 \end{pmatrix} \quad q = \begin{pmatrix} -295.2618 \\ 259.1926 \end{pmatrix}$$

$$E1c := \left[ 2k \cdot qp1 \cdot \frac{(zp1 - z1)}{\left[ (xp1 - x1)^2 + (yp1 - y1)^2 + (zp1 - z1)^2 \right]^{\frac{3}{2}}} \right] + \left[ 2k \cdot qn1 \cdot \frac{(zn1 - z1)}{\left[ (xn1 - x1)^2 + (yn1 - y1)^2 + (zn1 - z1)^2 \right]^{\frac{3}{2}}} \right] + \left[ 2k \cdot qp2 \cdot \frac{(zp2 - z1)}{\left[ (xp2 - x1)^2 + (yp2 - y1)^2 + (zp2 - z1)^2 \right]^{\frac{3}{2}}} \right]$$

$$E2c := \left[ 2k \cdot qp1 \cdot \frac{(zp1 - z2)}{\left[ (xp1 - x2)^2 + (yp1 - y2)^2 + (zp1 - z2)^2 \right]^{\frac{3}{2}}} \right] + \left[ 2k \cdot qn1 \cdot \frac{(zn1 - z2)}{\left[ (xn1 - x2)^2 + (yn1 - y2)^2 + (zn1 - z2)^2 \right]^{\frac{3}{2}}} \right] + \left[ 2k \cdot qp2 \cdot \frac{(zp2 - z2)}{\left[ (xp2 - x2)^2 + (yp2 - y2)^2 + (zp2 - z2)^2 \right]^{\frac{3}{2}}} \right]$$

$$E3c := \left[ 2k \cdot qp1 \cdot \frac{(zp1 - z3)}{\left[ (xp1 - x3)^2 + (yp1 - y3)^2 + (zp1 - z3)^2 \right]^{\frac{3}{2}}} \right] + \left[ 2k \cdot qn1 \cdot \frac{(zn1 - z3)}{\left[ (xn1 - x3)^2 + (yn1 - y3)^2 + (zn1 - z3)^2 \right]^{\frac{3}{2}}} \right] + \left[ 2k \cdot qp2 \cdot \frac{(zp2 - z3)}{\left[ (xp2 - x3)^2 + (yp2 - y3)^2 + (zp2 - z3)^2 \right]^{\frac{3}{2}}} \right]$$

Qp2=0

$$E1c = 687.734$$

$$E1 = 925.4$$

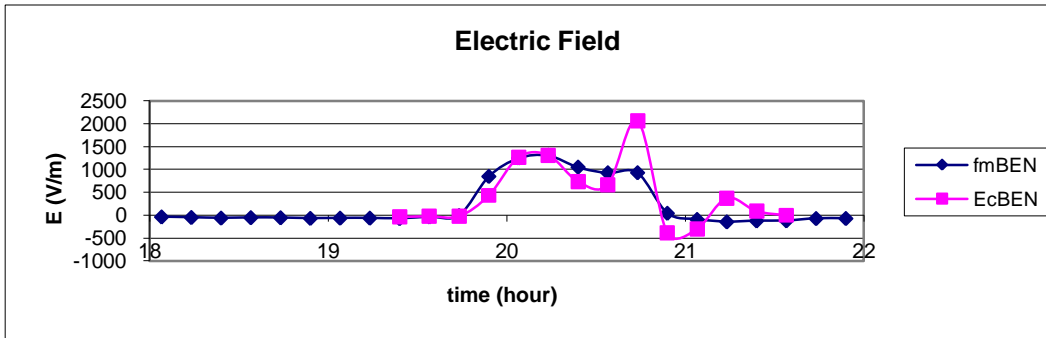
$$E2c = 2161.2655$$

$$E2 = 2829.769$$

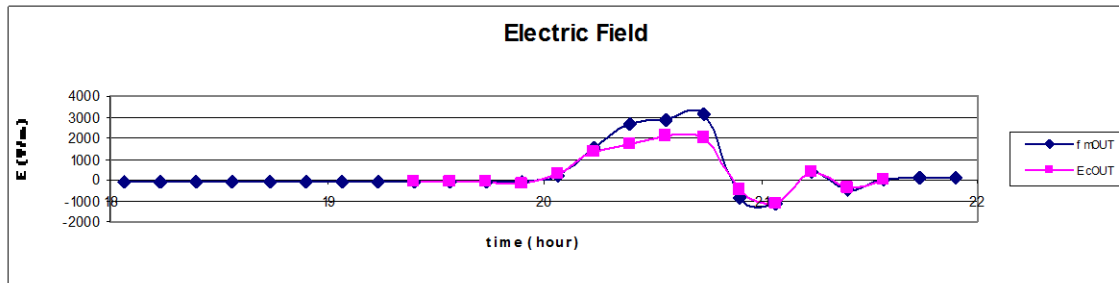
$$E3c = 2057.6156$$

$$E3 = 1276$$

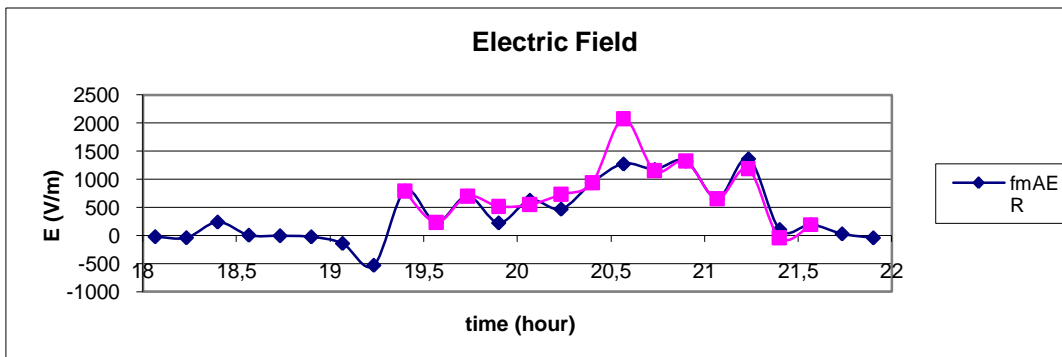
# STEP 4



Benevides



Outeiro



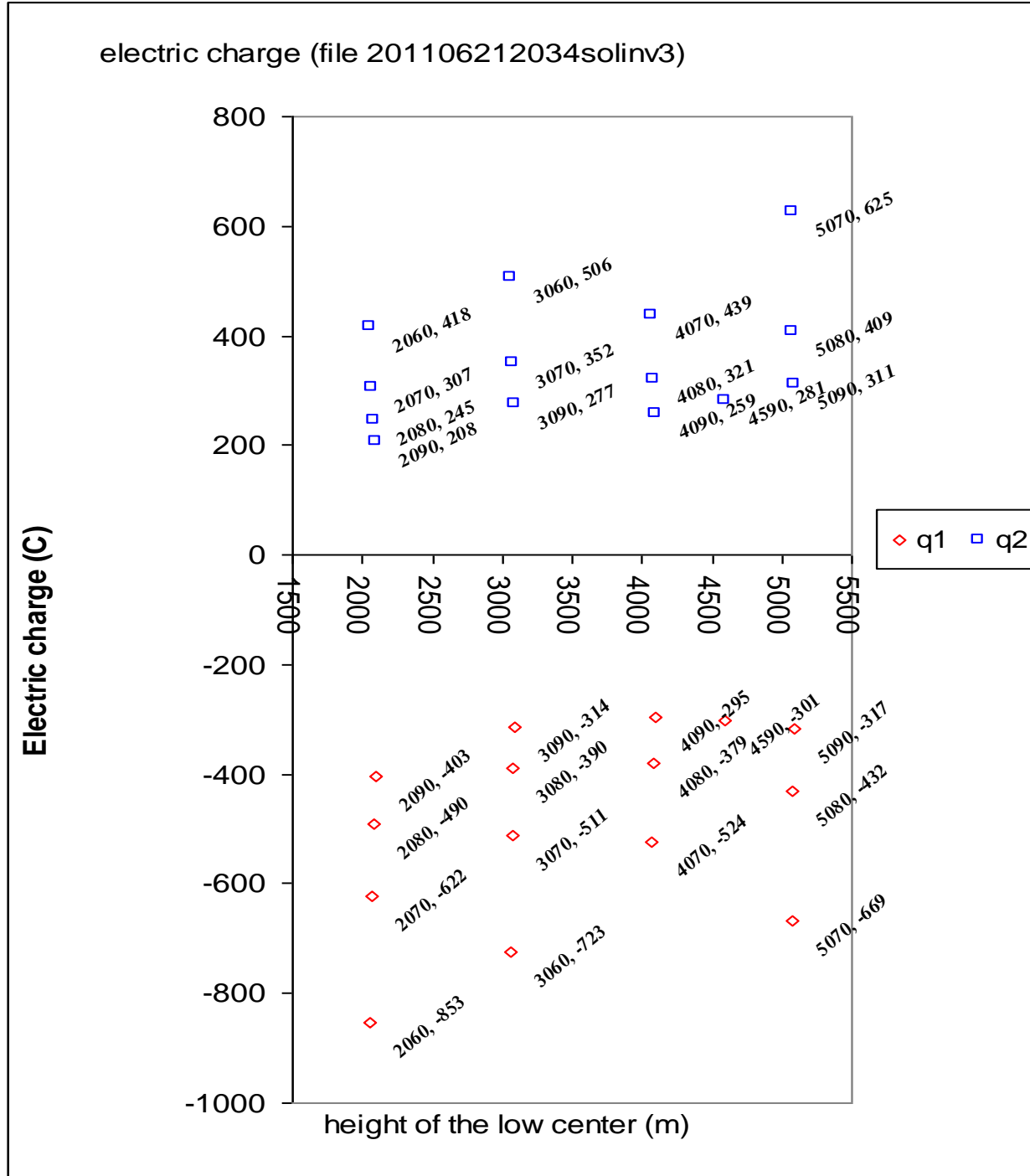
Aeroporto

# Calculated results 1 (matrix)

file	h1 (m)	h2 (m)	$h1+h2/10$ 0	q1 (C)	q2 (C)
1a	2000	6000	2060	-853	418
1	2000	7000	2070	-622	307
2	2000	8000	2080	-490	245
3	2000	9000	2090	-403	208
6b	3000	6000	3060	-723	506
4	3000	7000	3070	-511	352
5	3000	8000	3080	-390	273
6	3000	9000	3090	-314	277
7	4000	7000	4070	-524	439
8	4000	8000	4080	-379	321
9	4000	9000	4090	-295	259
9a	4500	9000	4590	-301	281
10	5000	7000	5070	-669	625
11	5000	8000	5080	-432	409
12	5000	9000	5090	-317	311
mean	3433	7800		-481.53	354.14

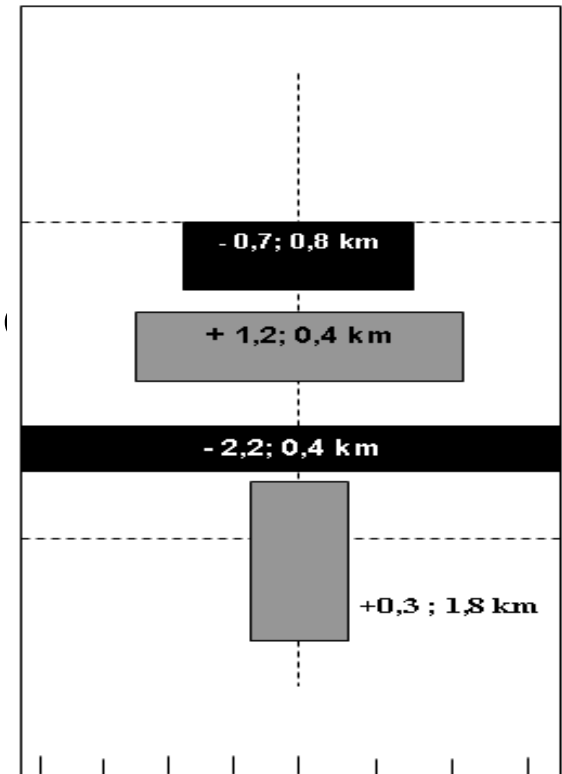


# 2.(grafic)



# discussion

- This methodology is not closed because
- of the nature of the inverse problem that
- has infinite solutions.
- The increasing knowledge of position and
- sign of charges means more confidence in charge magnitude.
- This knowledge can be given by balloons
- (Stolzenburg et al. 1998a, b and c).
- For a more detailed discussion on some
- improvement of this methodology see for
- exemple, Lacerda et al 2012b.



# Conclusions

- In this paper we present a methodology for calculating charge structure in convective clouds. The electric field measured by a network of field mill is fitted by calculated field and seems to be in reasonable agreement. The magnitude and location of charge centers were calculated and charge magnitude is of order of  $4 \times 10^2$  C
- $q(3433) = -481.53$  C  $q(7800) = 354.14$  C
- This result is greater than values presented in literature. For a better improvement of this methodology we recommend the use of other techniques that allow detect the position of centers and the sign of charges in that center.

- Thanks

- [moacirlacerda@gmail.com](mailto:moacirlacerda@gmail.com)

- [moacir.lacerda@ufms.br](mailto:moacir.lacerda@ufms.br)